

Wonder Leaf Yellow



FOLIAR FERTILIZER

◆ Form: Crystalline

◆ Package: 25kg

◆ Composition:

N | **21%**

P₂O₅ | **21%**

K₂O | **21%**

Total Nitrogen

Phosphorus pentoxide
water soluble

Potassium oxide
water soluble

Cu | **0,5%**

Mn | **0,5%**

Zn | **0,5%**

Copper
water soluble

Manganese chelate

Zinc chelate

Hydrous pH 1% solution: - 4,9

Wonder Leaf Mono Zn 8

FOLIAR FERTILIZER

◆ Form: Liquid

◆ Package: 20l, 1000l

◆ Composition:

Zn | **8%**

N | **5%**

S_O₃ | **10%**

Zinc chelate

Total Nitrogen

Sulfur trioxide
water soluble

Amino acids | **2,5%**

Organic acids | **8%**

1,6 | **1,33**
pH Density (kg/l)

Vegetable origin

Contains phytohormones, polysaccharides and adhesive

Wonder Leaf Wonder Micro

FOLIAR FERTILIZER

◆ Form: Liquid

◆ Package: 20l, 1000l

◆ Composition:

N | **4%**

MgO | **4%**

S_O₃ | **10%**

Total Nitrogen

Magnesium oxide
water soluble

Sulfur trioxide
water soluble

B | **0,5%**

Zn | **0,5%**

Cu | **0,5%**

Boron
water soluble

Zinc chelate

Copper chelate

Fe | **0,6%**

Mn | **0,9%**

Amino acids | **5,2%**

Iron chelate

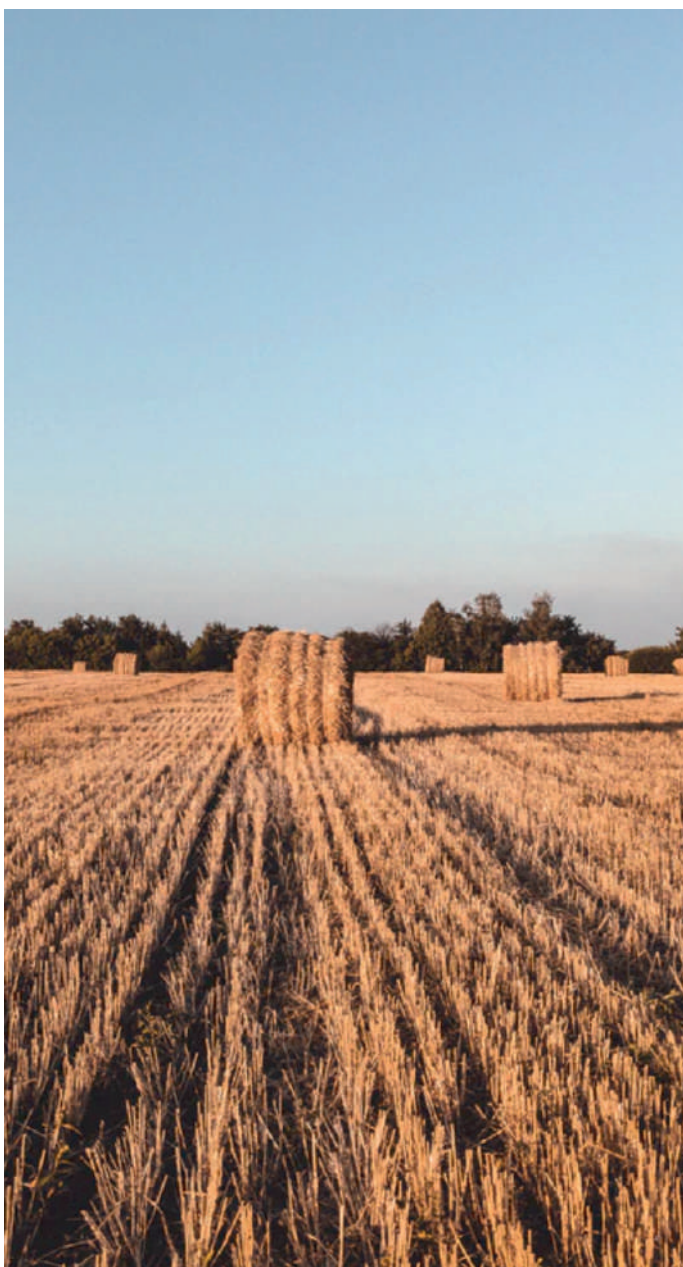
Manganese chelate

Vegetable origin

Organic acids | **5%**

3,6 | **1,28**
pH Density (kg/l)

Contains phytohormones, polysaccharides and adhesive



wonder

Production enterprise «WONDER» LLC

27A Pryvokzalna St.,
Mayaki village, Tulchin region,
Vinnytsia oblast, Ukraine, 23642
+38 (067) 00 00 304
info@wonder-corporation.com
wonder-corporation.com



wonder

And Earth is proud!



Wonder Leaf Amino 43

FOLIAR FERTILIZER

◆ **Form:** Liquid ◆ **Package:** 20L, 1000L

◆ **Composition:**

| | | | |
|------------------|-----|-----|----------------|
| Amino acids | 43% | 6,7 | 1,15 |
| Vegetable origin | | pH | Density (kg/L) |

Contains phytohormones, polysaccharides and adhesive

Wonder Leaf Orange

FOLIAR FERTILIZER

◆ **Form:** Crystalline ◆ **Package:** 25kg

◆ **Composition:**

| | | | | | |
|------------------------------------|-------|-------------------------------|----|-------------------------------|-----|
| P ₂ O ₅ | 7% | K ₂ O | 5% | S ₂ O ₃ | 16% |
| Phosphorus pentoxide water soluble | | Potassium oxide water soluble | | Sulfur trioxide water soluble | |
| B | 0,5% | Zn | 6% | Cu | 5% |
| Boron water soluble | | Zinc water soluble | | Copper water soluble | |
| Mo | 0,05% | Fe | 2% | Mn | 4% |
| Molybdenum water soluble | | Iron water soluble | | Manganese water soluble | |
| Amino acids | 18% | Hydrous pH 1% solution: - 3 | | | |
| Vegetable origin | | | | | |

Wonder Leaf Mono B 11

FOLIAR FERTILIZER

◆ **Form:** Liquid ◆ **Package:** 20L, 1000L

◆ **Composition:**

| | | | | | |
|---------------------|-----|----------------|----|-----|----------------|
| B | 11% | N | 5% | 7,9 | 1,37 |
| Boron water soluble | | Total Nitrogen | | pH | Density (kg/L) |

◆ **Composition:**

| | |
|------------------|----|
| Amino acids | 1% |
| Vegetable origin | |

 Contains phytohormones, polysaccharides and adhesive

Wonder Leaf Green

FOLIAR FERTILIZER

◆ **Form:** Crystalline ◆ **Package:** 25kg

◆ **Composition:**

| | | | | | |
|------------------------------------|-------|-------------------------------|----|-------------------------------|-----|
| P ₂ O ₅ | 7% | K ₂ O | 5% | S ₂ O ₃ | 16% |
| Phosphorus pentoxide water soluble | | Potassium oxide water soluble | | Sulfur trioxide water soluble | |
| B | 2% | Zn | 2% | Cu | 2% |
| Boron water soluble | | Zinc water soluble | | Copper water soluble | |
| Mo | 0,05% | Fe | 2% | Mn | 4% |
| Molybdenum water soluble | | Iron water soluble | | Manganese water soluble | |
| Amino acids | 15% | Hydrous pH 1% solution: - 3,4 | | | |
| Vegetable origin | | | | | |



Wonder Leaf Mono Mn 11

FOLIAR FERTILIZER

◆ **Form:** Liquid ◆ **Package:** 20L, 1000L

◆ **Composition:**

| | | | | | |
|-------------------|------|-----------------------------|----|-------------------------------|-----|
| Mn | 11% | N | 2% | S ₂ O ₃ | 10% |
| Manganese chelate | | Total Nitrogen | | Sulfur trioxide water soluble | |
| Amino acids | 1,4% | Hydrous pH 1% solution: 1,6 | | | |
| Vegetable origin | | | | | |

Contains phytohormones, polysaccharides and adhesive

Wonder Leaf Mono Fe 10

FOLIAR FERTILIZER

◆ **Form:** Liquid ◆ **Package:** 20L, 1000L

◆ **Composition:**

| | | | | | |
|--------------|------|----------------|------|----|----------------|
| Fe | 8,8% | N | 4,4% | 3 | 1,36 |
| Iron chelate | | Total Nitrogen | | pH | Density (kg/L) |

◆ **Composition:**

| | |
|-------------------------------|-----|
| S ₂ O ₃ | 12% |
| Sulfur trioxide water soluble | |

 Contains phytohormones, polysaccharides and adhesive

Wonder Leaf Mono Mo 3

FOLIAR FERTILIZER

◆ **Form:** Liquid ◆ **Package:** 20L, 1000L

◆ **Composition:**

| | | | | | |
|--------------------------|------|------------------|------|---------------------|------|
| Mo | 3% | N | 3% | B | 0,5% |
| Molybdenum water soluble | | Total Nitrogen | | Boron water soluble | |
| Zn | 0,5% | Amino acids | 4,3% | pH | 1,83 |
| Zinc chelate | | Vegetable origin | | Density (kg/L) | 1,15 |
| Organic acids | 15% | | | | |

Contains phytohormones, polysaccharides and adhesive

Wonder Leaf Wonder Macro

FOLIAR FERTILIZER

◆ **Form:** Liquid ◆ **Package:** 20L, 1000L

◆ **Composition:**

| | | | | | |
|-------------------------------|------|------------------------------------|----|-------------------------------|------|
| N | 12% | P ₂ O ₅ | 4% | K ₂ O | 6% |
| Total Nitrogen | | Phosphorus pentoxide water soluble | | Potassium oxide water soluble | |
| MgO | 0,5% | Amino acids | 3% | Hydrous pH 1% solution: 7 | |
| Magnesium oxide water soluble | | Vegetable origin | | Density (kg/L) | 1,19 |
| Organic acids | 1% | | | | |

Contains phytohormones, polysaccharides and adhesive

Wonder Leaf Mono Cu 6

FOLIAR FERTILIZER

◆ **Form:** Liquid ◆ **Package:** 20L, 1000L

◆ **Composition:**

| | | | | | |
|------------------|------|----------------|----|-------------------------------|------|
| Cu | 6% | N | 5% | S ₂ O ₃ | 7% |
| Copper chelate | | Total Nitrogen | | Sulfur trioxide water soluble | |
| Amino acids | 2,5% | Organic acids | 2% | Hydrous pH 1% solution: 1,6 | |
| Vegetable origin | | | | Density (kg/L) | 1,24 |

Contains phytohormones, polysaccharides and adhesive